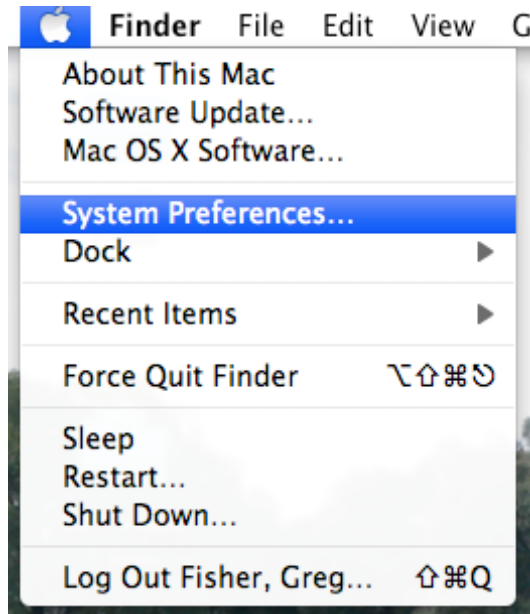
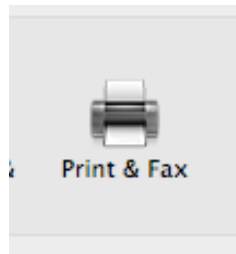


# Copy Center Printing for Mac OS 10.5 Leopard

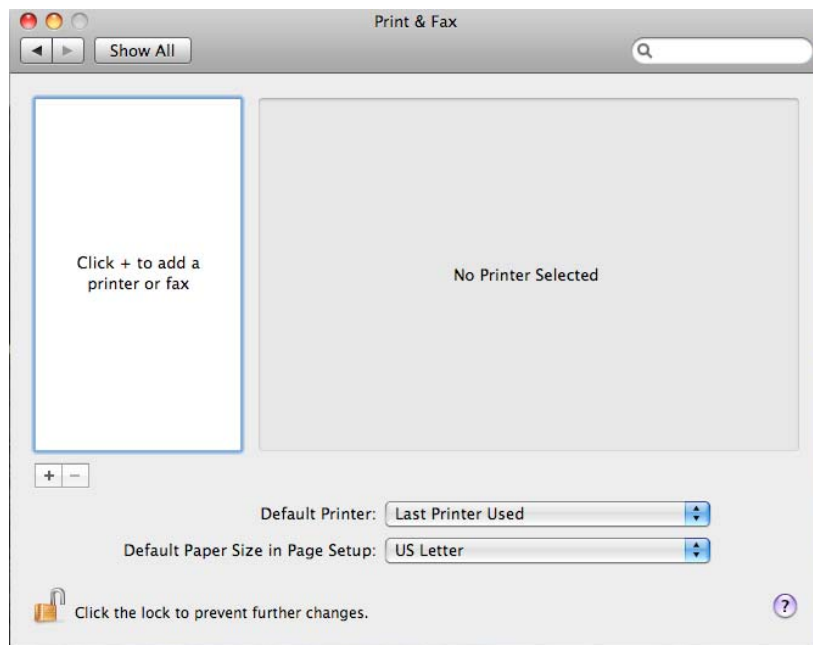
1. In the upper left corner of the screen **click** on the **Apple** and select **System Preferences...**



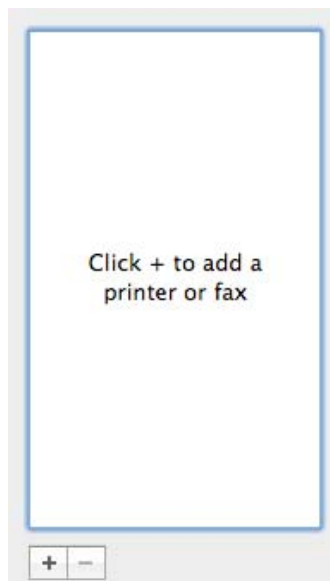
2. In **System Preferences** select **Print and Fax**



3. The image below is the Print and Fax screen in Mac OS 10.5 Leopard.



4. To add the printer Click the plus (+) sign.

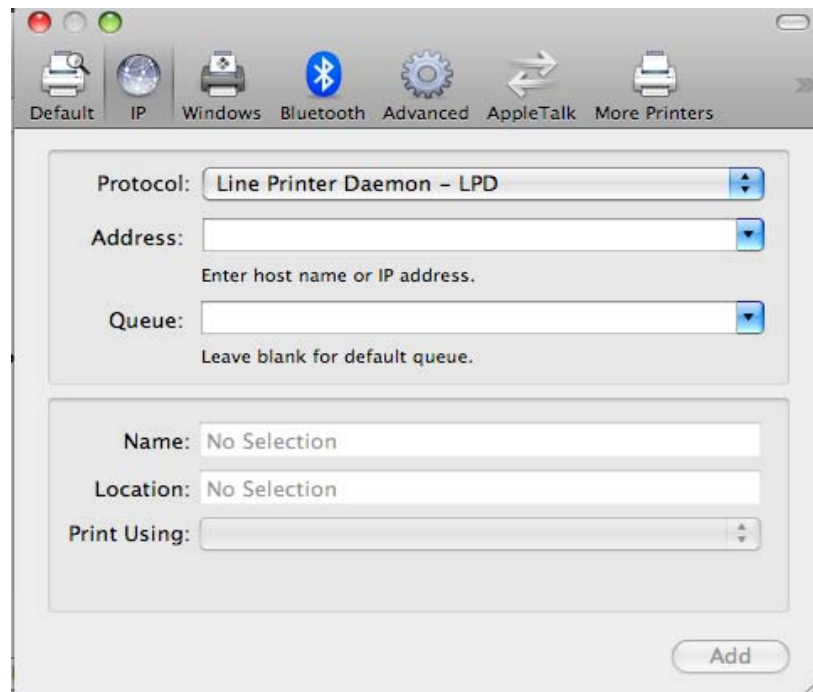


5. For the **COPY-COLOR** you will need to download the driver first and then install the printer. The driver file is located at the Xerox website on the following [link](#). Download the file and open the Print Driver folder and click on OSX Installer.

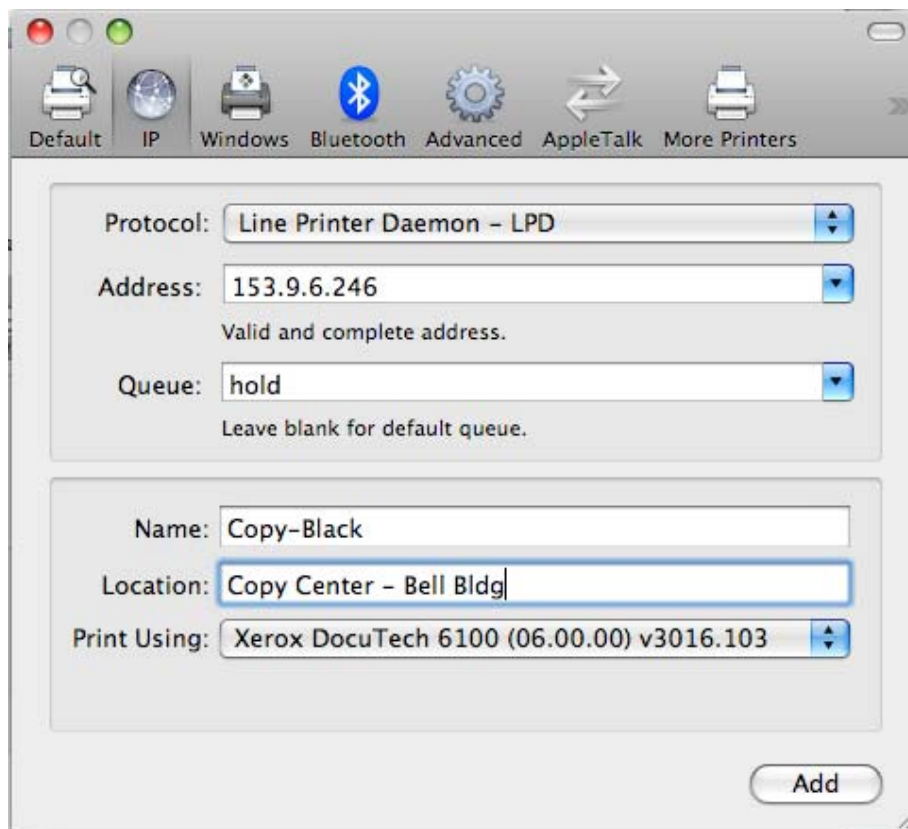
6. For the **COPY-BLACK** you will need to download the driver first and then install the printer. The driver file is located at the Xerox website on the following [link](#). Once the file downloads it will mount and open to install the driver.

7. The screen below will open and you will need to select **IP** from the menu bar from the top of the screen. You will then need to enter the **Host Name** of the printer in the **Address** line or IP address. (this is provided from helpdesk when the printer queue is created for network printing.) Copy that name to the **Queue** line. Use the table below to setup the copy center printers. Enter the data as written below into the appropriate field.

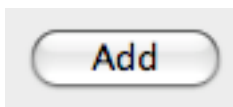
	<b>Copy Center Black Printer</b>	<b>Copy Center Color Printer</b>
<b>Address:</b>	153.9.6.246	copycolor.cofc.edu
<b>Queue:</b>	hold	hold
<b>Name:</b>	Copy-Black	Copy-Color
<b>Location</b>	Copy Center – Bell Bldg	Copy Center – Bell Bldg
<b>Print Using</b>	Xerox DocuTech 6100	DocuColor 240-250 PS



8. Once filled out the Copy Center Black print window will look like below:



9. Click Add.



10. Repeat for the other printer.