

The following information provides a guide to the MES Program requirements. For more information, please contact the MES Program Office at (843) 953-2000 or at mcconnellm@cofc.edu

PREREQUISITES

Before starting the MES Program, each student must have completed the following coursework at the undergraduate level:

- One academic year (two semesters with labs) of either Biology or Chemistry
- One academic year (two semesters with labs) of Biology or Chemistry (whichever one has not already been taken), or another physical or natural science

Also, as a prerequisite to the core course EVSS 659: Environmental Statistics (offered in the Spring), each student must either take the undergraduate course MATH 250: Statistical Methods (or an equivalent college level statistics course) OR pass the MES entrance exam in Statistics.

CORE COURSES

All MES students must take the following core courses:

NUMBER	TITLE	HOURS
EVSS 601	Economic Theory for Policy Analysis (Fall or Spring of the first year)	3
EVSS 602	Public Policy (Fall or Spring of the first year)	3
EVSS 646	Graduate Core Seminar (Fall or Spring of the first year)	1
EVSS 659	Environmental Statistics (Spring of the first year) Prerequisite: Math 250 (or equivalent), or pass the MES entrance exam in Statistics	3
Science Core	Either EVSS 610 (Environmental Biology), or EVSS 640 (Earth Systems Science), or EVSS 641 (Aqueous Geochem), or EVSS 650 (Energy Production & Resource Mgmt.). Students work with their Advisors to determine the most appropriate science core course to take to meet this requirement.	3 or 4
EVSS 680	Case Studies on Environmental Issues (Fall or Spring of the second year) Prerequisite: all other core courses	4

POTENTIAL SPECIALIZATIONS

Some students, in consultation with their Academic Advisor, may wish to create their own areas of specialization within the MES Program. For example, three areas of possible specialization and the courses that could be associated with them might be:

Coastal and Wetlands Management
EVSS 637: Wetlands Protection
EVSS 639: Wetlands Hydrology & Biogeochemistry
EVSS 645: Coastal Issues & Processes
EVSS 649: Geographic Info. Systems
EVSS 635: Land Use Law

Environmental Hazards
EVSS 649: Geographic Info. Systems
EVSS 650: Energy Production & Resource Management
EVSS 656: Atmospheric Science
EVSS 657: Satellite Meteorology
EVSS 658: Climate Change

Environmental Planning
EVSS 605: Environmental Law
EVSS 649: Geographic Info. Systems
EVSS 633: Urban Planning
EVSS 695: Local & Regional Econ Development
EVSS 695: Political Ecology

THESES AND INTERNSHIPS

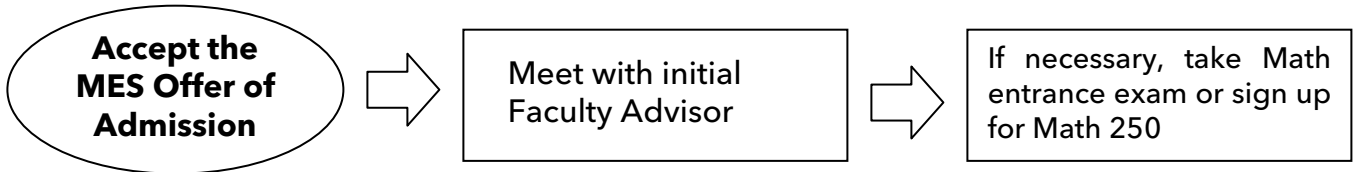
Every MES student must take six (6) hours of Internship or Thesis credits to complete the degree.

TOTAL CREDIT HOURS

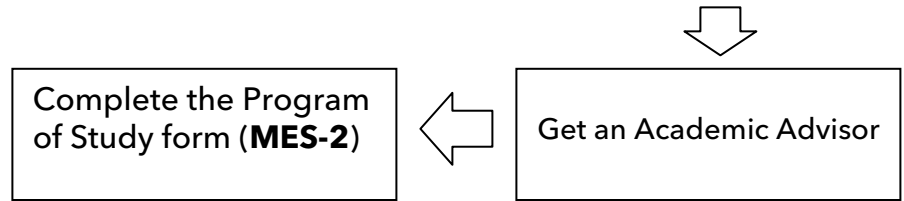
Every MES student must take a total of forty-one (41) credit hours in order to complete the degree.

THE PATH THROUGH THE MES PROGRAM

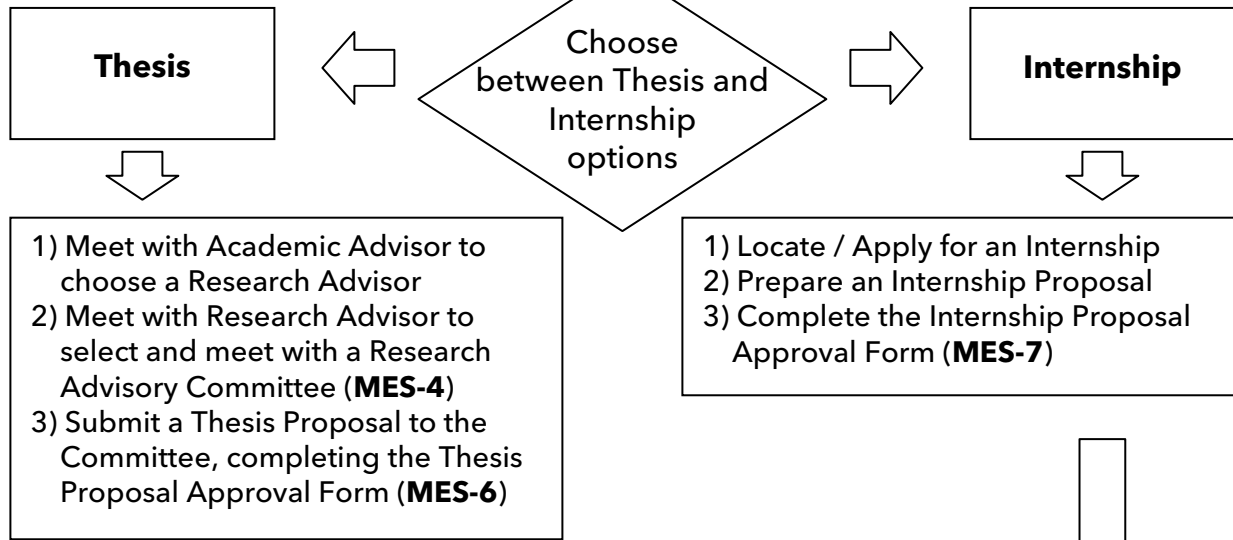
Before the First Semester:



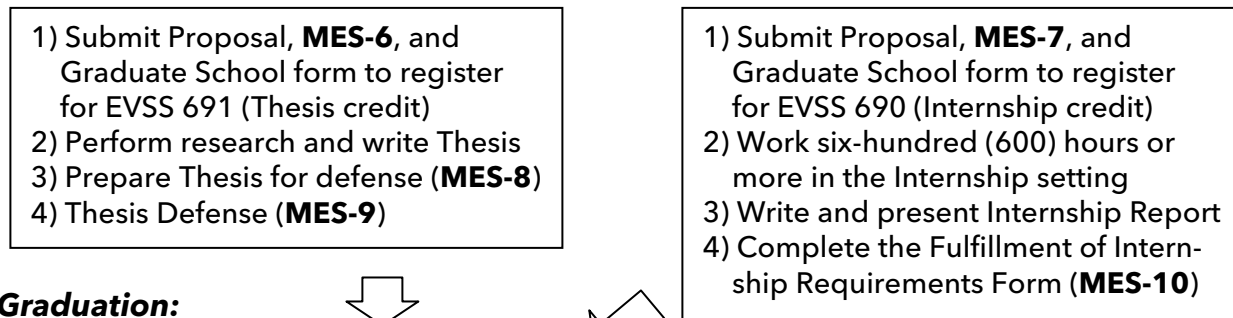
During the First Semester:



During the Second Semester:



During the Second Year:



For Graduation:

