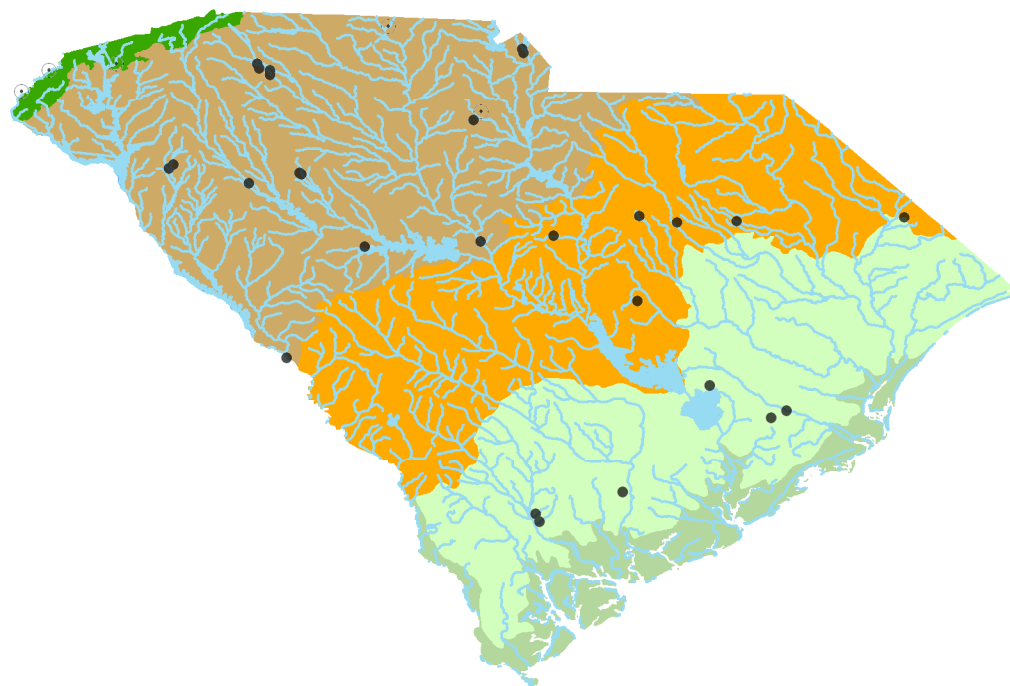


# South Carolina Distribution of *Ferrissia fragilis*, *Ferrissia rivularis*



## Legend

### Scientific Name

- *Ferrissia fragilis*
- *Ferrissia rivularis*

### Hydrology

- Streams
- US RF1 Lakes

### South Carolina Level III Ecoregions

- Blue Ridge
- Piedmont
- Southeastern Plains
- Middle Atlantic Coastal Plain
- Southern Coastal Plain

### Data Sources:

#### Snail Localities

The Freshwater Gastropods of South Carolina  
Robert T. Dillon, Jr. and Timothy W. Stewart  
<http://www.cofc.edu/~dillonr/FWGSC/>

#### Ecoregions

U.S. Environmental Protection Agency. 2003.  
Level III Ecoregions of the Continental United States, Map M-1 (revision of Omernik, 1987).  
U.S. Environmental Protection Agency, National Health and  
Environmental Effects Research Laboratory, Corvallis, OR  
<ftp://ftp.epa.gov/wed/ecoregions/sc/>

#### Hydrology

U.S. EPA Reach File Version 1.0 (RF1) for the Conterminous United States  
<http://www.epa.gov/nsdi/projects/rf1.htm>

Projection: GCS North American Datum 1927

GIS Consultant: James D. Florian, Jr. Ph.D.

